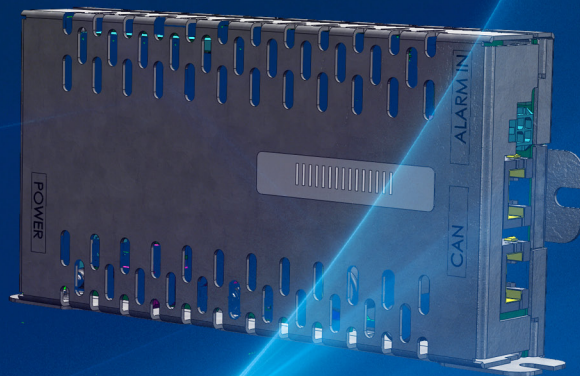


# VIDI LVD

## Battery/Load Disconnection Control Unit for OPUS Power Systems



### Product description

VIDI-LVD is easy-to-install DC-contactor driver unit that further expands comprehensive control and monitoring features of the OPUS DC Power Systems.

VIDI-LVD is designed to drive both magnetically latched and regular contactors typically used in DC power systems. It also includes two configurable alarm inputs, current measurement and monitoring of contactor status.

Contactor control parameters and alarms can be set and monitored by means of the WEB browser.

VIDI-LVD is universal solution for all OPUS DC Power Systems from 24 VDC up to 220 VDC.

### Features

- DC-contactor driver
- Contactor status monitoring
- System voltage measurement
- Current measurement
- 2 configurable alarm inputs
- Operation voltage range 19-280VDC
- Digital communication over CAN-bus with VIDI controller

## Technical specifications

General	
Operating voltage range	19–280VDC
Maximum Power consumption	<2W
Applicable	
- with latched or regular DC contactors	
- on distribution load or on battery string	

DC Contactor Coil Driver	
Maximum allowed continuous coil current: 2A	
Output voltage: system voltage	

System Voltage Measurement	
Range	0-280 VDC

Current sense	
60mV shunt	
Accuracy : <1%	

Alarm Inputs	
2 universal inputs	
Both inputs can be configured as temperature sensor or as digital input. Configuration is under control of VIDI system software.	
Digital input	Relay NO or NC
Temperature sensor	NTC

Visual Status Indication	
Green/red LED	

Connectors	
PowerCAN interface	2*RJ45
Shunt current connection	2*2 pin right angle MinFit
System voltage, coil drive, auxiliary input and shunt connection	2*4 pin right angle MiniFit
Alarm inputs	2*2 pin right angle MicroFit

Mechanical Data	
Dimensions (H*W*D)	75*160*27 mm
Protection class	IP20
Weight	320 g
Installation method	Wall mounted

Auxiliary Input	
Indication of the actual core position of the latched contactor	
Input status:	Contactor status:
shorted	ON
open	OFF

Environment and standards	
Operating temperature	-20°C – +50°C
Storage temperature	-40°C - +70°C
Humidity max.	95% relative humidity, non-condensed
Altitude max.	2000 m above sea level
Safety	IEC/EN 60950-1 *Tested as a part of Opus C-series system
EMC	Emissions: EN/ IEC 61000-6-4 Immunity: EN/ IEC 61000-6-2 Harmonic currents: EN/ IEC 61000-3-2 Voltage fluctuations & flicker: EN/ IEC 61000-3-3 *Measured as a part of Opus C-series system
Environment	Operation: ETS 300 019-2-3 Storage: ETS 300 019-2-1 Transportation: ETS 300019-2-2
RoHS & WEEE	2002/95/EC, 2002/96/EC
Quality	ISO 9001, ISO 14001
Approvals	CE

Ordering Informations	
Part no: 94G450x	